

## Maps

### List of figures

FIGURE A17-1:	COMMUNAL CONSERVANCIES IN NORTHERN NAMIBIA, INDICATING THOSE VISITED AS PART OF THE MISSION .....	2
FIGURE A17-2:	COMMUNAL CONSERVANCIES AND COMMUNITY FORESTS IN NAMIBIA IN 2016 .....	3
FIGURE A17-3:	COMMUNAL CONSERVANCIES AND PROTECTED AREAS IN RELATION TO NAMIBIA’S SIX MAJOR BIOMES .....	4
FIGURE A17-4:	COMMUNAL CONSERVANCIES IN RELATION TO POVERTY DISTRIBUTION IN NAMIBIA .....	5
<b>FIGURE A17-5:</b>	<b>MAP SHOWING NUMBER OF HWC INCIDENCES IN ALL COMMUNAL CONSERVANCIES, AND THE 20 COMMUNAL CONSERVANCIES WITH HIGHEST HWC INCIDENCES .....</b>	<b>6</b>
<b>FIGURE A17-6:</b>	<b>CONSERVANCY MANAGEMENT PERFORMANCE .....</b>	<b>6</b>
<b>FIGURE A17-7:</b>	<b>WILDLIFE SPECIES RICHNESS COMMUNAL CONSERVANCY MAP .....</b>	<b>7</b>
FIGURE A17-8:	WILDLIFE SPECIES DISTRIBUTION IN NAMIBIA.....	8
FIGURE A17-9:	COMMUNAL CONSERVANCY CONTRIBUTIONS TO THE PROTECTION OF BIODIVERSITY AND ENDEMISM .....	8
<b>FIGURE A17-10:</b>	<b>AREA OF CONSERVATION CONNECTIVITY SUITABLE FOR FINANCING BY MOBILIZATION OF PAYMENT OF ECOSYSTEM SERVICES</b>	<b>10</b>
<b>FIGURE A17-11:</b>	<b>FARMING SYSTEMS IN NAMIBIA .....</b>	<b>11</b>
FIGURE A17-12:	WATER DEFICIT IN NAMIBIA .....	11

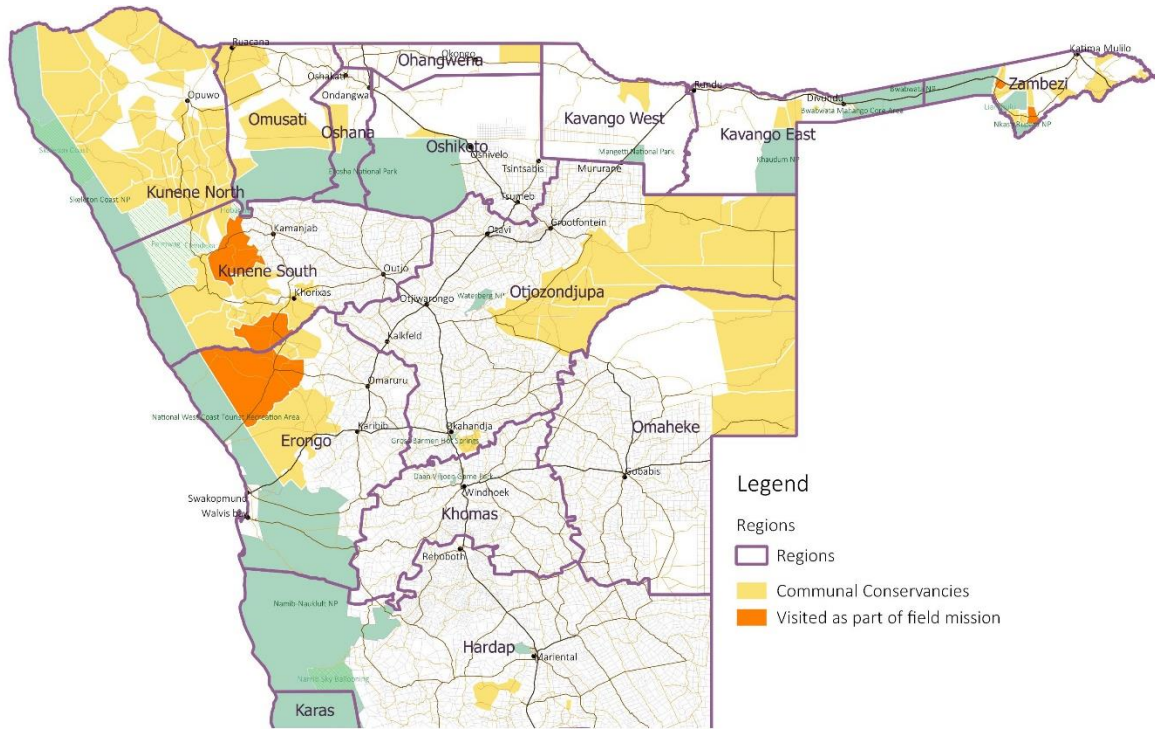
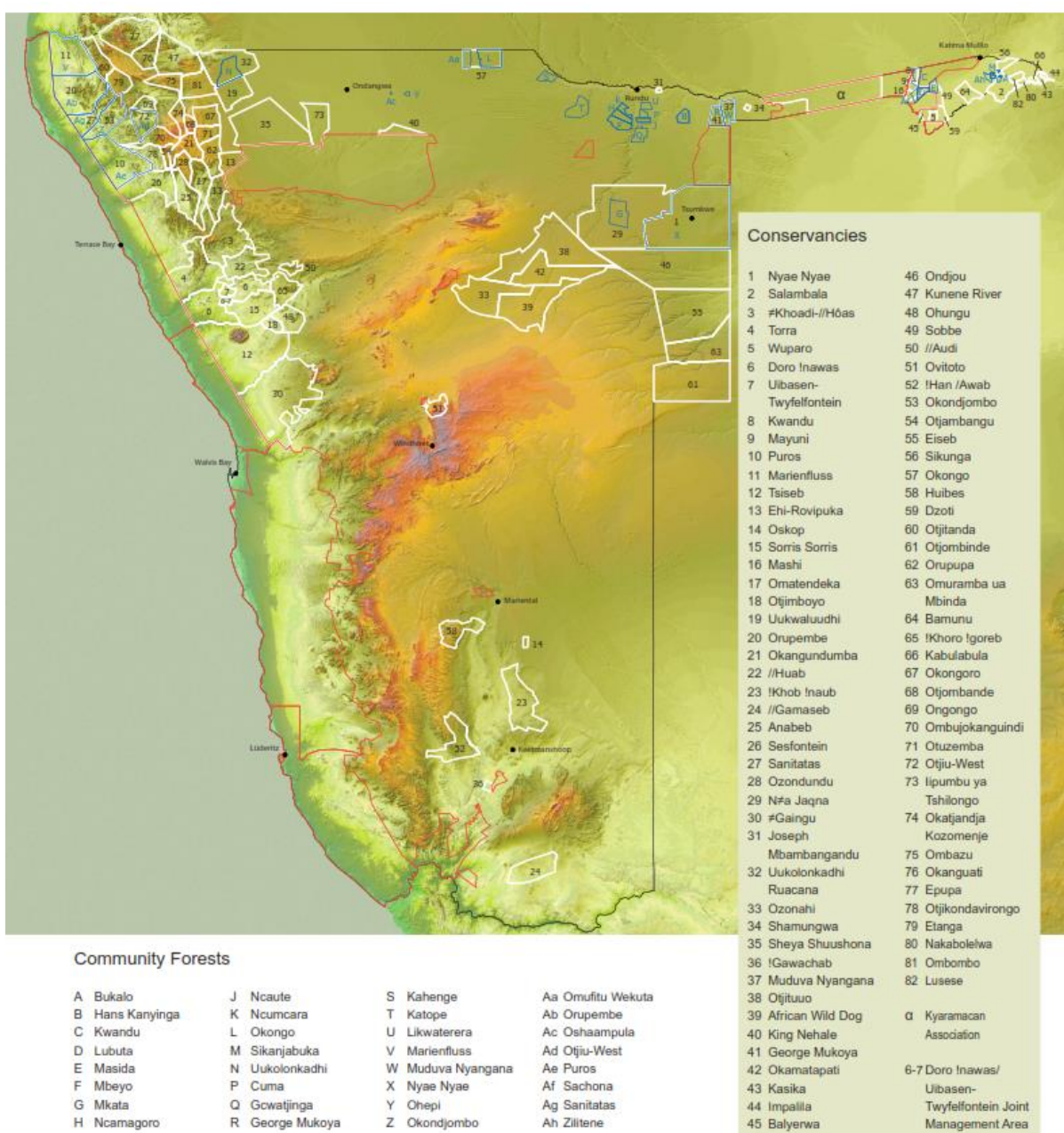
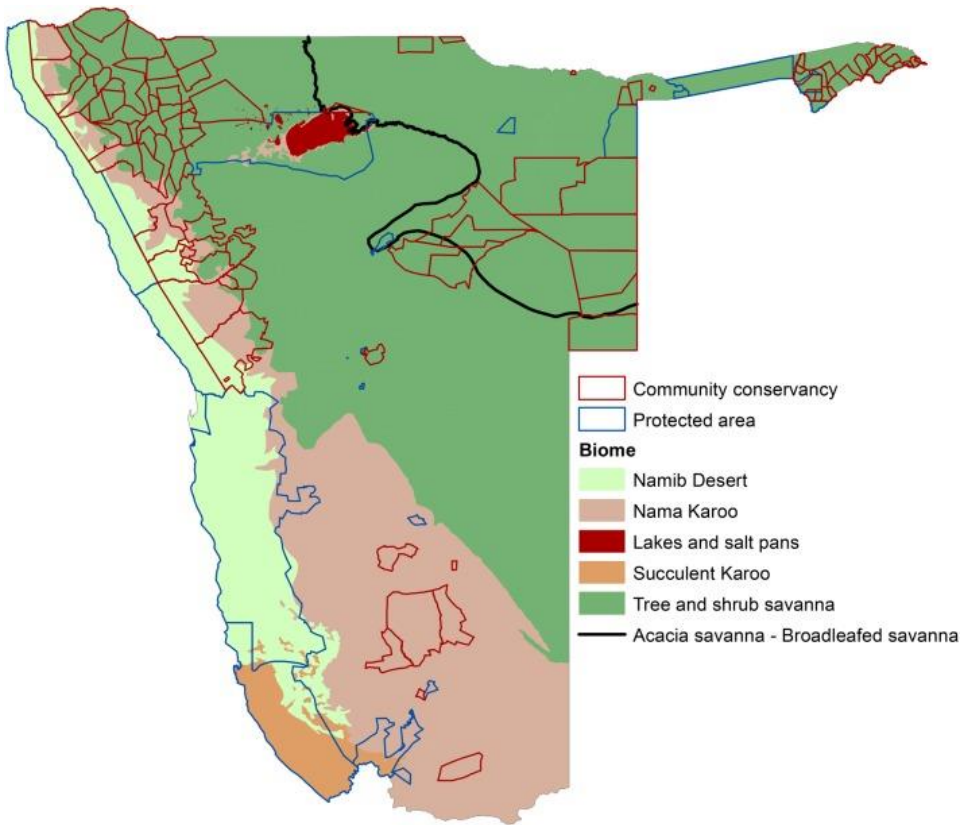


Figure A17-1: Communal conservancies in northern Namibia, indicating those visited as part of the Mission



Source: NACSO 2016 status

Figure A17-2: Communal conservancies and community forests in Namibia in 2016



[https://www.ncbi.nlm.nih.gov/core/lw/2.0/html/tileshop\\_pmc/tileshop\\_pmc\\_inline.html?title=Click%20on%20image%20to%20zoom&p=PMC3&id=4429124\\_pone.0125531.g001.jpg](https://www.ncbi.nlm.nih.gov/core/lw/2.0/html/tileshop_pmc/tileshop_pmc_inline.html?title=Click%20on%20image%20to%20zoom&p=PMC3&id=4429124_pone.0125531.g001.jpg)

Figure A17-3: Communal conservancies and protected areas in relation to Namibia's six major biomes

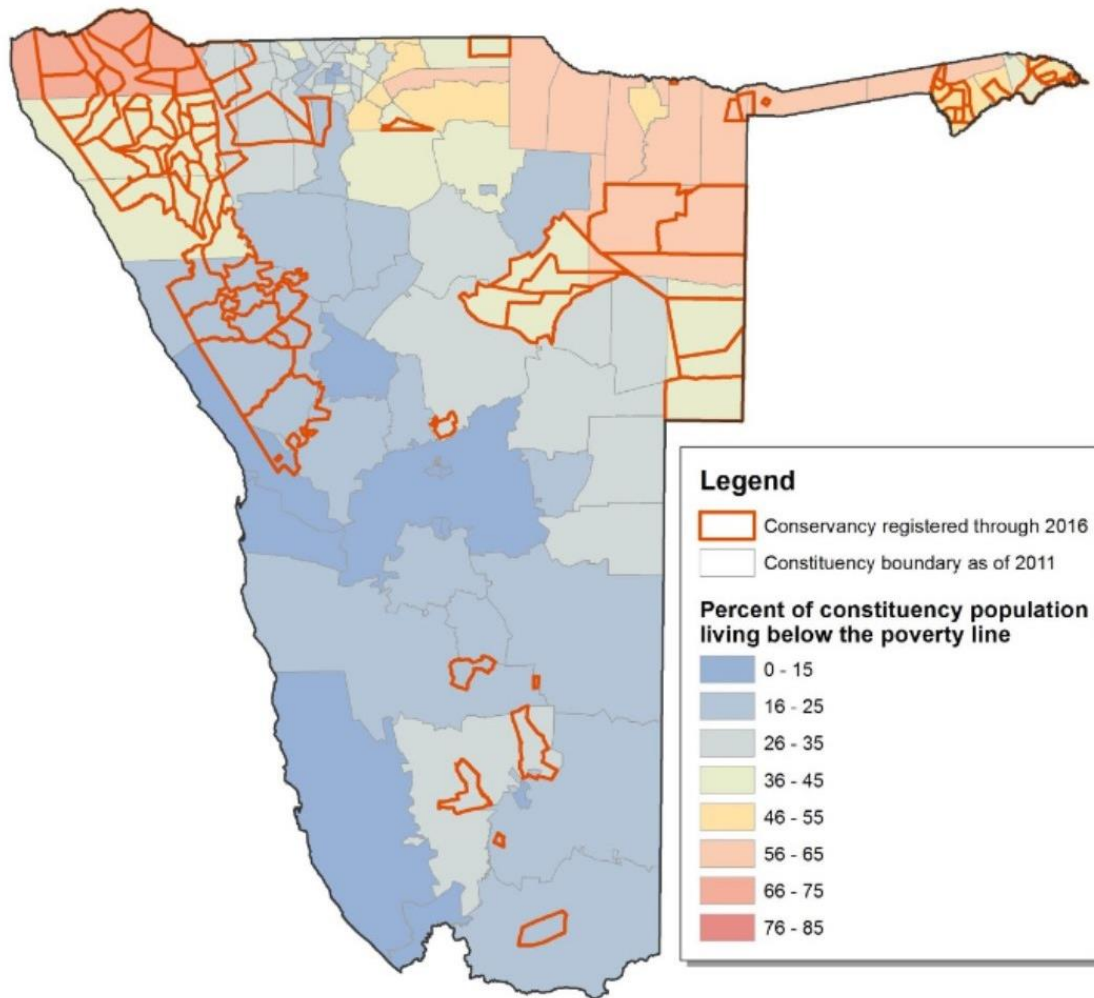


Figure A17-4: Communal conservancies in relation to poverty distribution in Namibia

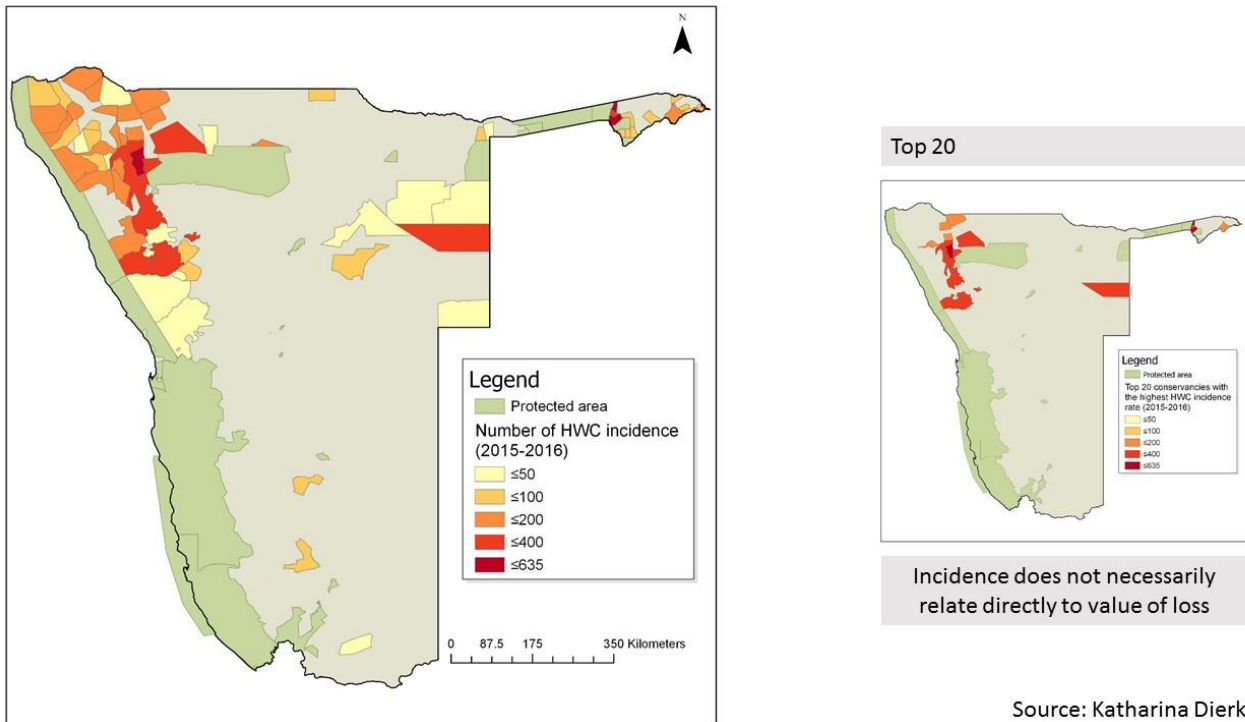
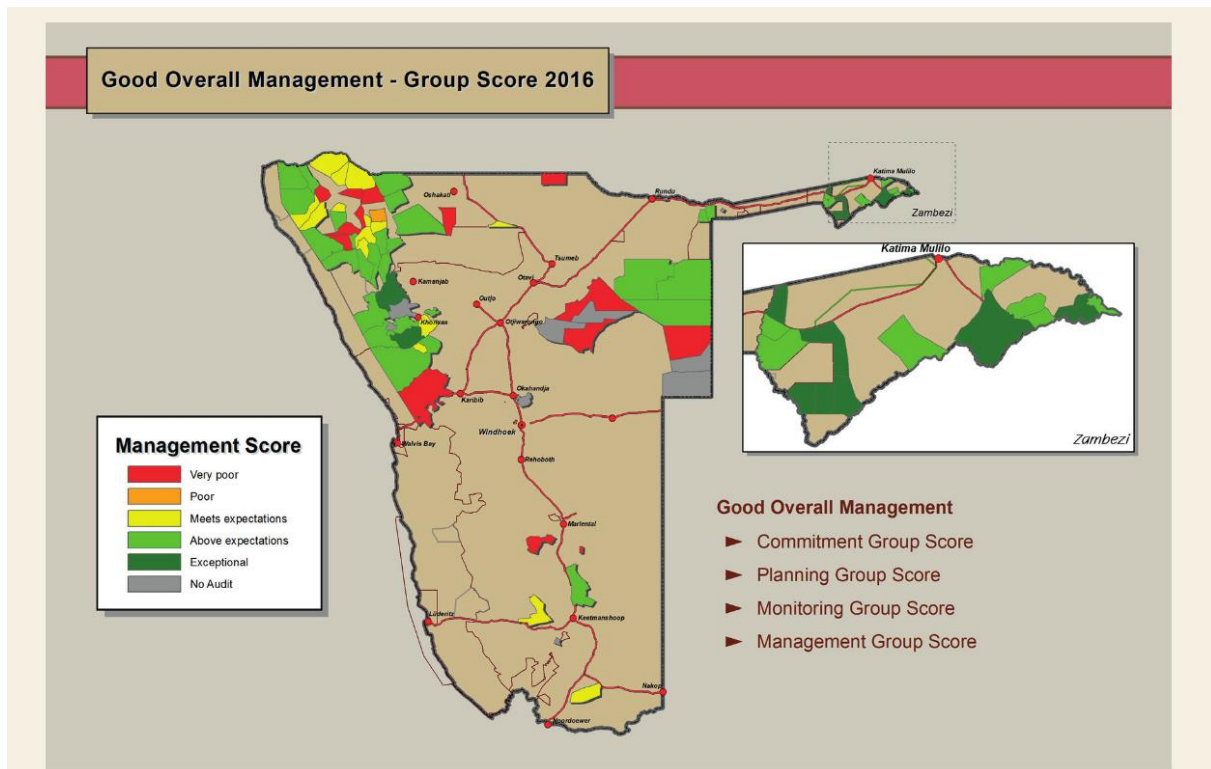
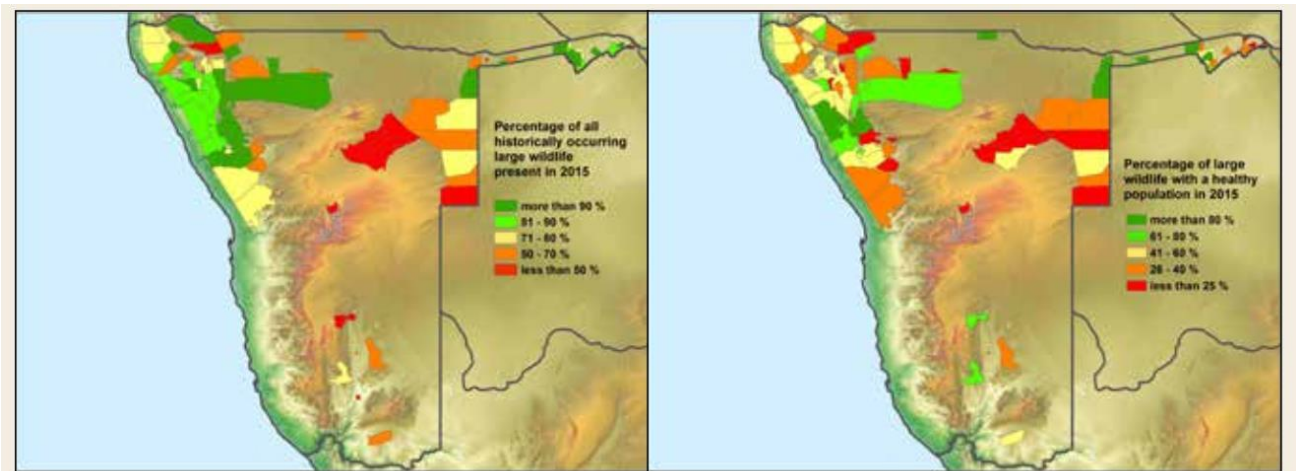


Figure A17-5: Map showing number of HWC incidences in all Communal Conservancies, and the 20 Communal Conservancies with highest HWC incidences



Source: NACSO 2016

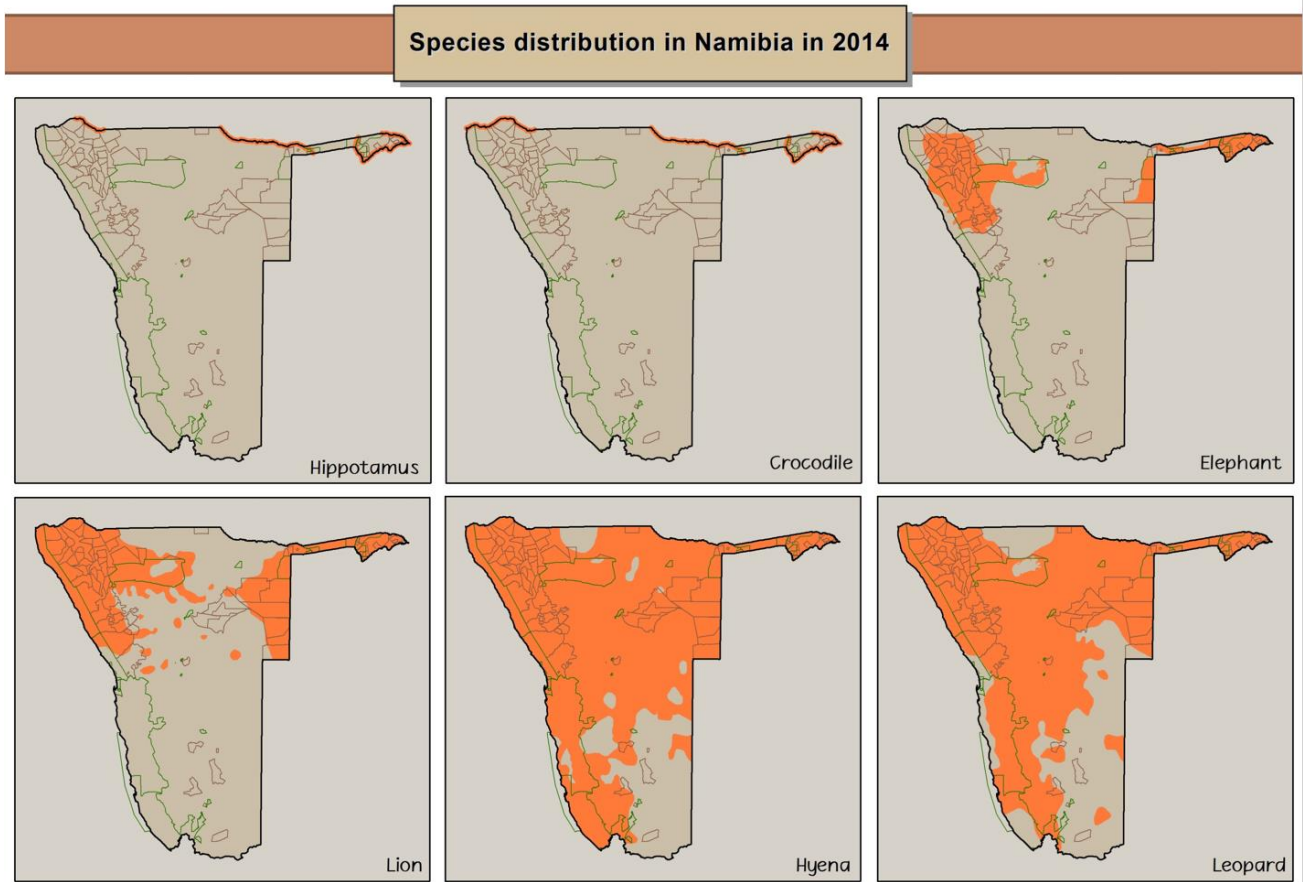
Figure A17-6: Conservancy management performance



**The wildlife species richness map** (left) indicates the large wildlife species currently present in conservancies, as a percentage of those which were present in the past. A high score means that a large percentage of the species are still in the area.

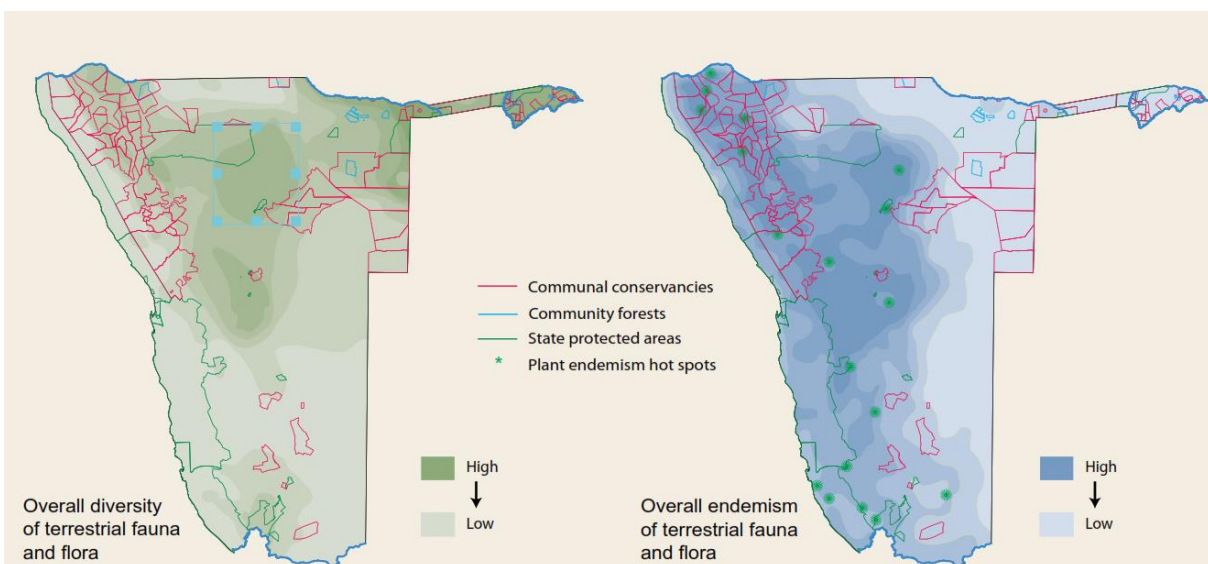
**The wildlife population health** (right) indicates the percentage of all large wildlife species that historically occurred, which currently have a healthy population in a particular conservancy. A healthy population is one large enough to sustain itself. National parks included on the maps for comparison are Etosha and Nkasa Rupara.

**Figure A17-7:** Wildlife species richness Communal Conservancy map



Source: Diggle 2018

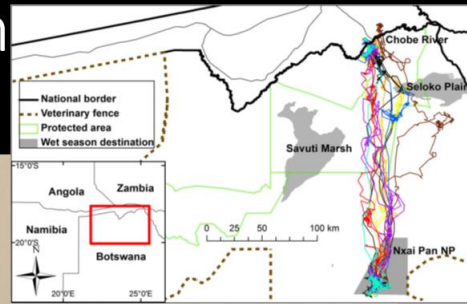
Figure A17-8: Wildlife species distribution in Namibia



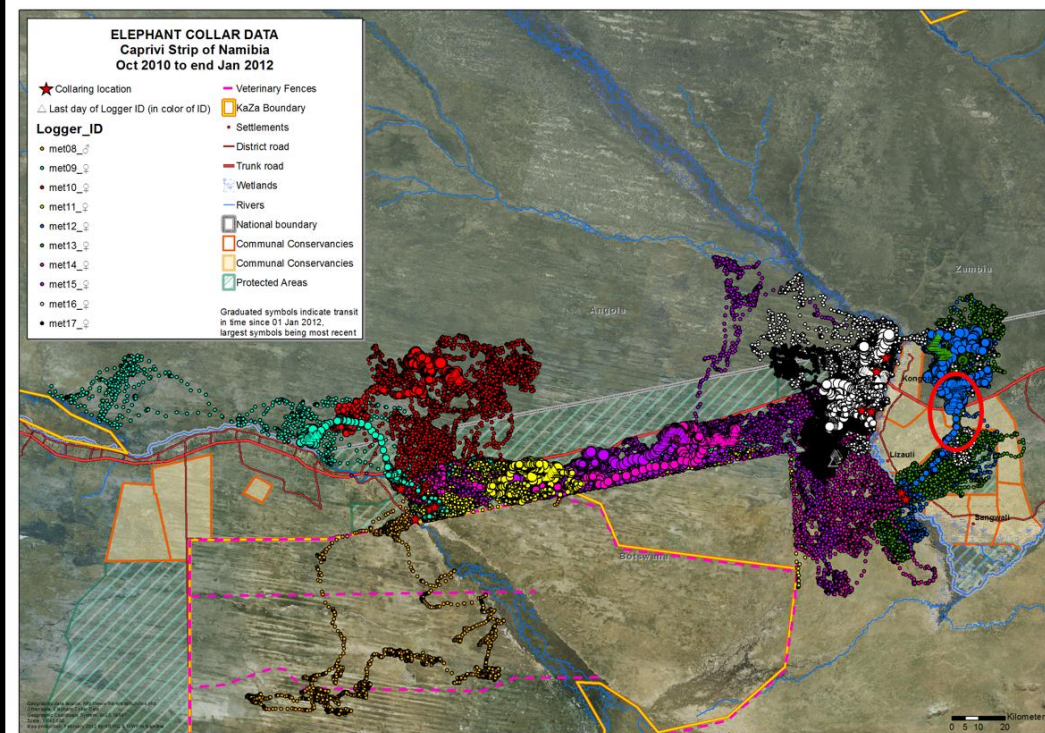
Conservancies and community forests in relation to areas of high biodiversity (left) and endemism (right). NASCO status 2015

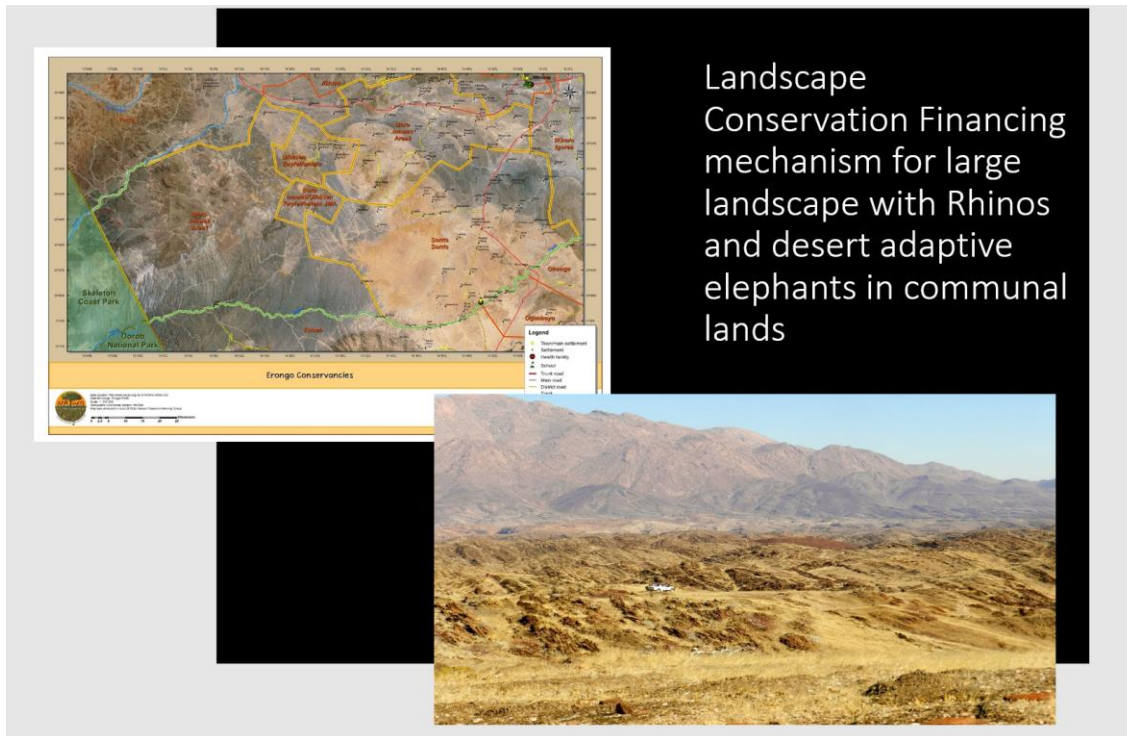
Figure A17-9: Communal Conservancy contributions to the protection of biodiversity and endemism

# Scheme for Floodplain Zebra Sanctuary



# Protection / management of Corridors

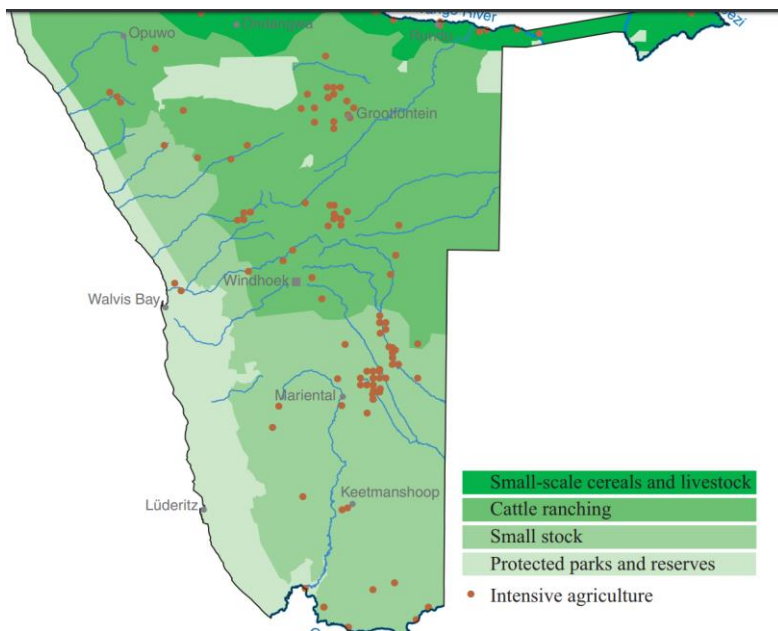




For poor communities, areas of unoccupied land for wildlife conservation or small but critical conservation corridors could be achieved by mobilizing international donor funds to pay “existence services”. Proposed sites identified by WWF include elephant protection / management corridors; the proposed Floodplain Zebra Sanctuary; or landscape Conservation for large landscapes with Rhinos and desert adaptive elephants in the north-eastern and eastern regions.

Source: Diggle 2018

**Figure A17-10:** Area of conservation Connectivity suitable for financing by mobilization of payment of ecosystem services



<http://www.the-eis.com/data/literature/Farming%20systems%20in%20Namibia%20Part%201.pdf>

Figure A17-11: Farming systems in Namibia

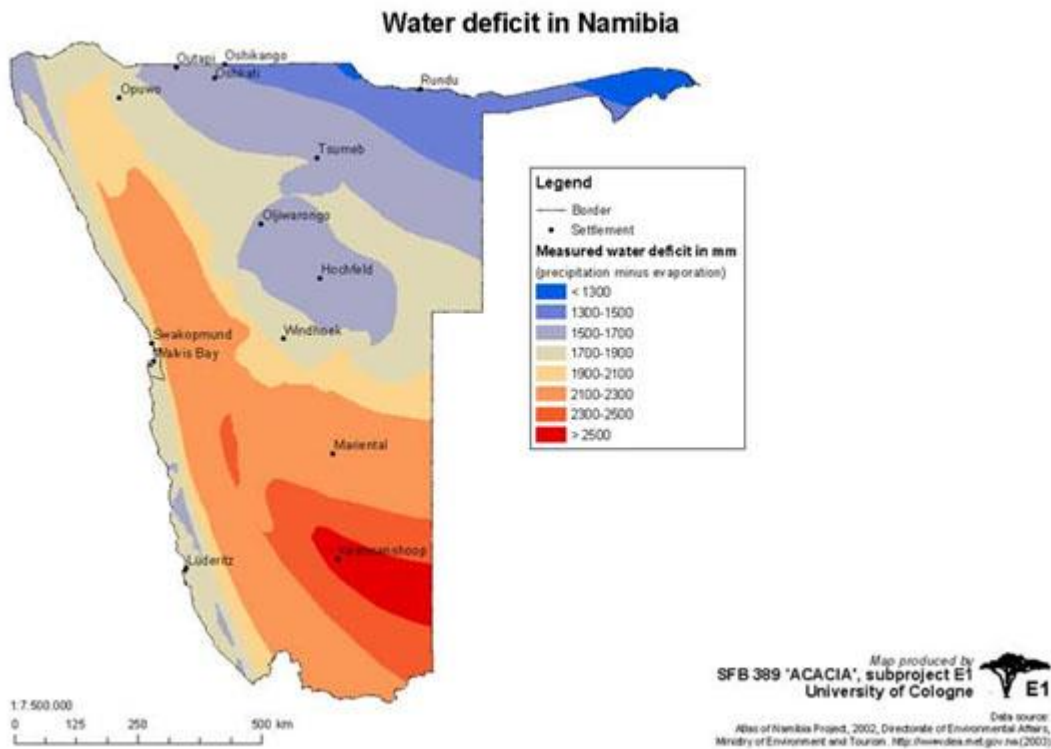


Figure A17-12: Water deficit in Namibia